



# PISCES

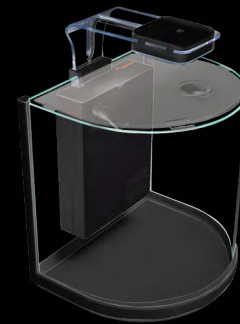
ALL-IN-ONE Nano Aquarium

V1 /2019

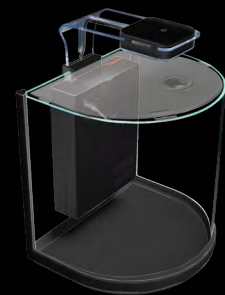
775 Columbia St. Brea, CA 92821  
Tel: (888) 915-2782 (562) 697-9860  
[www.aquatop.com](http://www.aquatop.com)



[www.aquatop.com](http://www.aquatop.com)



PCS-5G



PCS-3G



PCS-5GB



PCS-5GC

PISCES All-in-one Nano Aquarium Manual 2019

OWNER'S MANUAL

## INTRODUCTION

Aquatop's Pisces All-in-One Series of Nano Glass Aquariums offer a variety of sleek, modern designs. The PCS-3G & PCS-5G consist of a bowfront, semi-circle glass which is perfect for panoramic viewing. The PCS-5GB has a bullet-shaped glass design with seamless curved corners and the PCS-5GC is a modern Cube-style aquarium held together with high-grade unobtrusive silicone. Each unit includes an innovative and unique multi-stage internal filter box system which comes complete with a submersible pump and an easy-change drop-in filter cartridge filled with premium activated carbon. In addition to the Mechanical and Chemical filtration, the Pisces Nano Aquariums also include a drop-in Bio-plate and ceramic rings for superb Biological Filtration. All models include a super bright touch sensitive LED Light complete with a moonlight setting, and a tank lid with mounting clips. These space-saving desktop aquariums are perfect for fresh or saltwater set-ups and are ideal for shrimp or other small invertebrates.

## WARNINGS & SAFETY

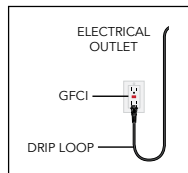
To guard against injury, basic safety precautions should be observed, including the following:

### READ ALL SAFETY INSTRUCTIONS BEFORE USE.

Please read this instruction manual thoroughly before operating. AQUATOP is not responsible for damage caused by failure to comply with the recommended set up procedures.

### SAFETY & OPERATION INSTRUCTIONS

1. The product must be placed on a level surface at all times
2. Use specified voltage.
3. A drip loop must be used with all electrical aquarium devices.  
A drip loop is a self-made part of the cord hanging below the receptacle.  
(See Fig. 1)



4. A GFCI (Ground Fault Circuit Interrupter) (See Fig. 1) should be used in the branch circuit supplying all power to water pumps and electrical aquarium equipment. If you do not have a GFCI, we strongly recommend having a qualified electrician install one prior to operating any aquarium component.

5. The aquarium is made of glass. Please handle with care.

## SPECIFICATIONS

MODEL	TANK CAPACITY	DIMENSIONS	POWER	FLOW RATE	LED
PCS-3G	3 GAL	10" (W) x 8.3" (D) x 10.2" (H)	120V/60Hz	53 GPH	4.3W
PCS-5G	5 GAL	12" (W) x 9.1" (D) x 12.2" (H)	120V/60Hz	53 GPH	4.3W
PCS-5GB	5 GAL	16" (W) x 7.2" (D) x 10.2" (H)	120V/60Hz	53 GPH	8.2W
PCS-5GC	5 GAL	12" (W) x 9" (D) x 10.6" (H)	120V/60Hz	53 GPH	4.3W

## WARRANTY

### AQUATOP 1 YEAR LIMITED WARRANTY

Products are warranted by AQUATOP Aquatic Supplies to the original purchaser against defective material and workmanship under normal use for a period of 1 Year from the date of the original purchase. Products have no warranty if: 1.) The product has been serviced, modified or tampered with by anyone other than AQUATOP Aquatic Supplies, 2.) The product has been abused or damaged (including broken or cracked bulbs) 3.) Aquarium Stands/Cabinets are not cared for properly (ie. warping or discoloration from water damage or salt residue), and/or 4.) The product has been transported without proper packaging.

\* The additional 1 Year Extended Warranty applies when you REGISTER online with Aquatop. Register your Extended Warranty at [www.aquatop.com](http://www.aquatop.com)

**Note:** Extended warranty is available for qualifying products. See [www.aquatop.com](http://www.aquatop.com) for a list of qualifying products.

### WARRANTY LIABILITY DISCLAIMER

In no event will Aquatop® be liable for any consequential or incidental damages, including but not limited to, lost sea life, personal injury, property damage, equipment damage, lost profits, lost wages, lost savings, lost income, etc., arising out of the use of any Aquatop® product.

For more information on tank health and maintenance as well as other products carried by Aquatop, visit our website: [www.aquatop.com](http://www.aquatop.com)

## TOUCH SENSITIVE LED LIGHT CONTROL

1. The LED light included with your PISCES Aquarium has 3 settings.
2. Once the LED light is plugged in, simply touch the power button located on the top of the LED housing once to turn the light on.
3. Touching the power button a second time will change the light output to the Moonlight Setting.
4. Touch the power button a third time to turn the LED light off.



Fig.3

## BASIC GUIDELINES

### New Tank Syndrome – Nitrogen Cycle:

Before adding aquatic creatures to your new aquarium, please be aware that there are changes in the water parameters that occur within 2-4 weeks of a new tank setup that can create a toxic environment for healthy fish and invertebrates. This process is known as the nitrogen cycle or 'tank cycling.' Ensuring that your water is properly 'aged' prior to introducing fish will greatly help prevent the loss of livestock in the early stages of a new tank. We recommend using an aquarium grade test kit to test your aquarium water parameters before adding new livestock.

NOTE: To accelerate the nitrogen cycle period, we recommend using Aquatop's NitroBoost Dry Nitrifying Bacteria.

For more information, please contact your local dealer or visit [www.aquatop.com](http://www.aquatop.com)

## MAINTENANCE

1. Aquatop recommends replacing the Filter Cartridge every 30 days for best results. Always rinse the new filter cartridge with clean, fresh water before installing (Part #PCS-RCI).
2. Periodically remove the bio-plate and rinse away any excess debris in a fish-safe container filled with aquarium water. Do not rinse the bio-plate with tap water as doing so may result in a loss of beneficial bacteria.

## WARNINGS & SAFETY

6. When opening the boxes, use caution and beware of any broken glass that may have occurred during shipping.
7. Check the power cables and plugs for damage before plugging into an outlet. If damaged, do not operate.
8. For Indoor use only. Do not place the product in damp areas like yards or patios.
9. Please cut all power before installing, cleaning or performing maintenance. Make sure hands and plugs are dry before plugging in the power cord.
10. Keep children away from this product.
11. Do not use chemicals or solvents when cleaning; use warm water only.

## FEATURES

### PCS-3G / 5G

- Bowfront Glass Aquarium for Panoramic Viewing
- Integrated Filtration System w/ Easy to Change Cartridge
- Mechanical, Chemical & Biological Filtration
- Replaceable Filter Cartridge w/ Premium Activated Carbon
- Touch Sensitive LED Lighting w/ Moonlighting
- For Fresh and Saltwater

### PCS-5GB

- Modern Bullet-shaped Glass Aquarium
- Integrated Filtration System w/ Easy to Change Cartridge
- Mechanical, Chemical & Biological Filtration
- Replaceable Filter Cartridge w/ Premium Activated Carbon
- Touch Sensitive LED Lighting w/ Moonlighting
- For Fresh and Saltwater

### PCS-5GC

- High Quality Glass Cube Aquarium
- Integrated Filtration System w/ Easy to Change Cartridge
- Mechanical, Chemical & Biological Filtration
- Replaceable Filter Cartridge w/ Premium Activated Carbon
- Touch Sensitive LED Lighting w/ Moonlighting
- For Fresh and Saltwater



PCS-3G / 5G

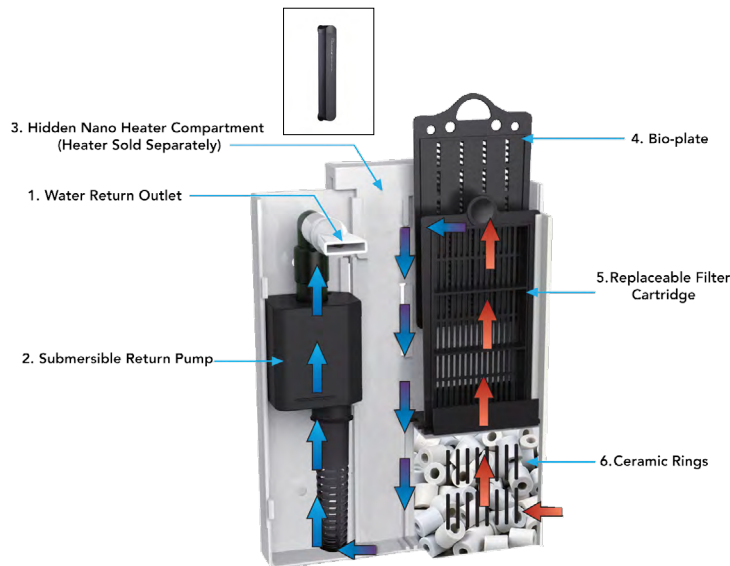


PCS-5GB



PCS-5GC

MULTI-STAGE INTERNAL FILTER BOX DIAGRAM

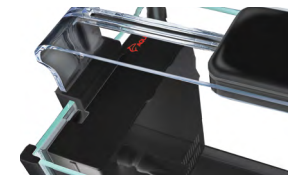


1. Carefully remove contents from packaging and set aside the filter box, LED light, aquarium lid, and mounting brackets.
2. Carefully remove the glass aquarium and place it on a flat, level surface. Check for any signs of damage. If damage is found, re-package all the contents back into the product box and return it to the original place of purchase.
3. Aquatop strongly recommends performing a leak test by placing the unit in the desired location and filling with water. If there are no leaks, drain the aquarium and begin the set-up.
4. Install the mounting brackets for the aquarium lid.
5. Install the filter box along the back panel of the aquarium. Then remove and rinse the included filter cartridge (Part #PCS-RCI) and bio-plate with clean fresh water, before re-installing back inside of the filter box. (See Fig. 1)

Fig.1



Fig.2



6. Install the filter box lid. (See Fig. 2)
7. Next, install the LED Light into the designated slot of the filter box. Make sure to run the power cord for the LED light through the opening in the support arm. (See Fig. 3)
8. Place the aquarium lid onto the aquarium by lining up the corners of the lid with the mounting brackets.
9. Fill the aquarium with clean fresh water making sure that the pre-installed submersible pump is completely underwater (See Fig. 4). Then plug in the submersible pump and LED light.

Fig.3

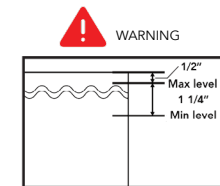
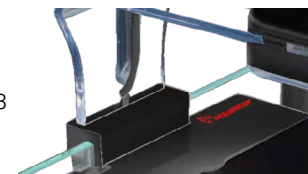


Fig.4

**NOTE:** The Internal Filter Box is equipped with a hidden nano heater compartment. Aquatop recommends using our NH-15W Nano Heater (sold separately).



**NOTE:** Placing your PISCES Nano Aquarium on an unlevel surface may result in leakage and/or damage to your aquarium and its inhabitants not covered by warranty.