

## AQUATOP 1 YEAR LIMITED WARRANTY

Products are warranted by AQUATOP Aquatic Supplies to the original purchaser against defective material and workmanship under normal use for a period of 1 year from the date of the original purchase.

Products have no warranty if:

- 1.) The product has been serviced, modified or tampered with by anyone other than AQUATOP Aquatic Supplies,
- 2.) The product has been abused or damaged (including broken or cracked bulbs), and/or
- 3.) The product has been transported without proper packaging.

### WARRANTY LIABILITY DISCLAIMER

In no event will Aquatop® be liable for any consequential or incidental damages, including but not limited to, lost sea life, personal injury, property damage, equipment damage, lost profits, lost wages, lost savings, lost income, etc., arising out of the use of any Aquatop® product.

For more information on tank health and maintenance as well as other products carried by Aquatop, visit our website: [www.aquatop.com](http://www.aquatop.com)

775 Columbia St. Brea, CA 92821  
Tel: (888) 915-27821 (562) 697-9860

[www.aquatop.com](http://www.aquatop.com)  
VI /2016



[aquatop.com](http://aquatop.com)



# FORZA SERIES

## EZ-PRIME CANISTER FILTER



FORZA Series Canister Filter Manual 2016

OWNER'S MANUAL

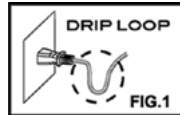
Aquatop's FORZA Canister Filter Series is an innovative multistage filtration system. Each unit incorporates a patented, revolutionary one pump EZ Prime button so your canister filter begins cycling with just one pump! All models of the FORZA Canister Filter include mechanical and biological filtration media, along with all of the hardware required to get the unit up and running right out of the box! As a bonus feature, all FORZA Models include a unique chemical filtration process which comes in the form of an integrated replaceable carbon canister cartridge. The replaceable cartridge is easily placed directly in the media tray so it's no longer necessary to handle messy bags full of carbon. All FORZA Models also incorporate a number of additional features such as an optional surface skimmer on the inlet, a handle for easy lifting of the barrelhead, and a quick disconnect valve which is color coded; red for the inlet and blue for the outlet.

The FORZA Canister Filter Series with UV Sterilization (FZ7/FZ9/FZ13) delivers crystal clear aquarium water with the latest advancements in UV technology. In addition to biological, mechanical and chemical filtration, the FORZA UV Series includes UV Sterilization for added protection against harmful bacteria and unsightly algae. As an added innovative safety feature, the UV Models include a protective cover for the UV switch, a protective UV quartz tube guard, and should the canister move 30 degrees in any direction, the UV will automatically shut off and protect your system. Welcome to the new age of UV filtration!

DESCRIPTION	PART NUMBERS		
	FZ7 UV / FZ4	FZ9 UV / FZ5	FZ13 UV / FZ6
Replacement Fine White Filter Pads	RFP-FZ7	RFP-FZ9	RFP-FZ13
Replacement Coarse Blue Filter Pad	RCP-FZ7	RCP-FZ9	RCP-FZ13
Replacement O-ring Seal	FZ7-ORINGSET	FZ9-ORINGSET	FZ13-ORINGSET
Replacement Impeller	FZ7-RI	FZ9-RI	FZ13-RI
Replacement Carbon Cartridge	FZ7-RCI	FZ9-RCI	FZ13-RCI
<b>UV Model Only</b>			
Replacement 7W UV LIGHT	R7WUV-SQ		
Replacement 9W UV LIGHT		R9WUV-SQ	
Replacement 13W UV LIGHT			R13WUV-SQ
Replacement Quartz Tube	FZ7-RQS	FZ9-RQS	FZ13-RQS

It is your sole responsibility to verify that the plug and the receptacle are clean and free of moisture and salt build-up at all times. The receptacle must be free of water, salt, calcium, magnesium and dust. Failure to do so can cause fire, damage to property, and permanent damage to the product and personal injury not limited to loss of life.

- 1) Read and follow all instructions.
- 2) A drip loop must be used with all electrical aquarium devices. A drip loop is a self-made part of the cord hanging below the receptacle. (See Fig. 1)



- 3) A GFCI (Ground Fault Circuit Interrupter) should be used in the branch circuit supplying all power to water pumps and electrical aquarium equipment. If you do not have a GFCI, we strongly recommend having a qualified electrician install one prior to operating any aquarium component.
- 4) Do not plug into extension cord/power strip.
- 5) Use this product for its intended use only.
- 6) Never yank or pull the cord from the electrical outlet.
- 7) Do not operate if the plug or wire is damaged.
- 8) Do not operate without water.
- 9) Verify that hands are dry prior to disconnecting the power.
- 10) To reduce the risks of electrocution, keep all connections dry.
- 11) For indoor use only.
- 12) If the product falls into water, do not reach for it. First, unplug the unit. Then retrieve the unit from the water. If any of the electrical components get wet, unplug immediately.
- 13) Do not use soaps or detergents when cleaning this device. Thoroughly clean and rinse with warm water and make sure the device is completely dry before connecting.
- 14) Do not disassemble the UV lamp while connected top power or turned on.
- 15) Do not look directly into the UV lamp when plugged in; UV light may damage your eyesight. Always keep cover on when UV light is in use.
- 16) Keep this product away from children.

Note: Always disconnect power to unit before performing any maintenance or bulb replacement.

Note: Check unit for any signs of damage. If signs of damage are present, return to original place of purchase.

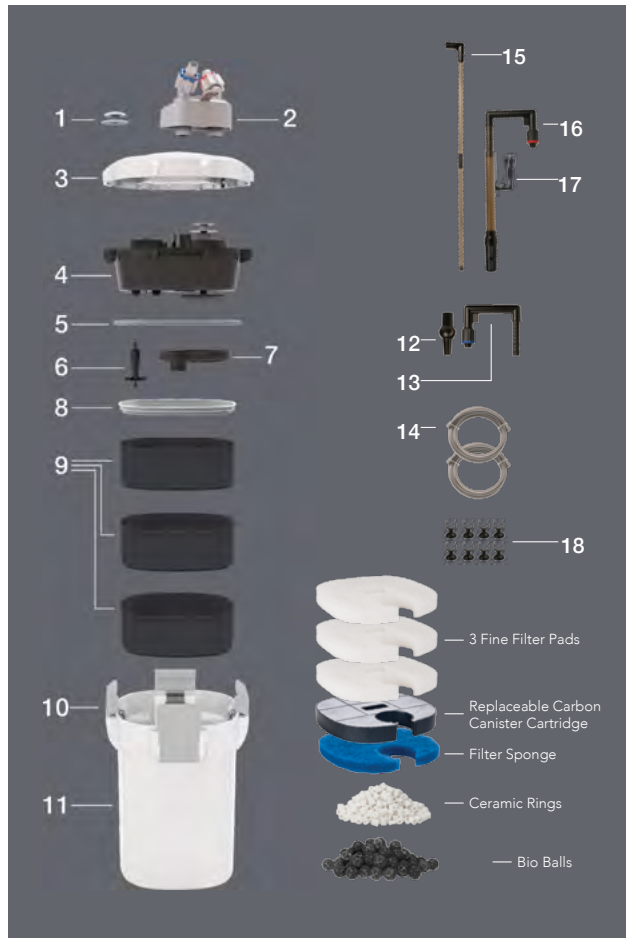
ISSUE	PROBLEM	SOLUTION
Compressing & Depressing Self-Priming pump has no response	Inlet / Outlet tubing is attached in error onto Quick Dis-connect Valve.	Re-install Inlet / Outlet tubing onto Quick Dis-connect Valve. Switching Sides to which they are attached.
The Motor is not operating	The Power is off.	Turn on the Power.
	The Shaft is broken. The Impeller is missing or the Motor is clogged with a foreign object such as excess debris, algae or substrate.	Turn off the power and replace the Shaft.  Re-install the Impeller or Clean out the Motor System.
Slow or Inhibited water flow	Tubing or Quick Dis-connect-valve is extremely Dirty.  Hoses have been installed incorrectly.	Periodically clean the inside of the tubing as well as Quick Dis-connect Valve.  Check whether the tubing is tangled or crimped.
Abnormal sound is emitted when the Filter is turn on	Air is entering through the Inlet hose connection.  Air is trapped in the Filter main body enclosure.	Check whether the Inlet hose and tubing are connected properly.  Leaving the power on, gently rock the canister filter to help remove the trapped air.
Abnormal sound is emitted when the Filter is operating	Damaged Impeller or Shaft.	Replace Impeller ( Contact Aquatop for Parts ).
	Decreased water flow due to dirty Impeller.	Remove Impeller for cleaning.
	Insufficient Lubrication.	Apply ample lubrication to all O-Rings.

FEATURES



- High Performance
- Quiet Operation
- Patented One Pump EZ Prime System
- Easy to Use & Maintain
- Helps Provide Crystal Clear Water
- Includes Replaceable Canister Carbon Cartridge
- Suitable for Freshwater or Saltwater

EXPLODED VIEW / SET-UP & ASSEMBLY GUIDE



FILTRATION MEDIA



- a. Fine White Filter Pads
- b. Coarse Blue Filter Pad
- c. Replaceable Carbon Cartridge
- d. Bio Balls
- e. Ceramic Rings

MULTI-STAGE FILTRATION



- **Bio filtration**  
Both Bio balls and ceramic rings provide a large surface area for beneficial bacteria to colonize and break down harmful toxins in the aquarium water.
- **Chemical filtration**  
The replaceable canister carbon filter cartridge removes odor, discoloration and impurities.
- **Mechanical Filtration** – The Coarse Blue Pad removes larger dirt or debris while the White Polishing Pad removes finer debris and particulates.

- 1. One Pump EZ Prime Button
- 2. Quick Dis-connect Valve
- 3. Canister Lid
- 4. Pump Head
- 5. Main O-ring Seal
- 6. Impeller
- 7. Impeller Cover
- 8. Media Tray Lid
- 9. Media Trays
- 10. Barrel Head Clips
- 11. Canister Body
- 12. Optional Jet Return
- 13. Outlet U-bar
- 14. Inlet/Outlet Tubing
- 15. Spray Bar
- 16. Inlet U-bar
- 17. Surface Skimmer
- 18. Mounting Clips



- Make sure that the Prime button is in the down position.
- Pull up on the Prime button until you reach the top position.
- Firmly push down on the priming button until the button is back to the down position. Aquarium water will start to fill the canister filter.
- Product Features

Note: If the aquarium water does not start flowing into the canister filter, please unplug the unit and check all of the tube and hose connections to make sure that they are securely fastened.

**\* UV Power Switch Available on UV Model Only**

ITEM	HEAD HEIGHT	POWER	FLOW RATE	UV LIGHT	PIPE TYPE	MEDIA CASE LAYERS	TANK VOLUME
FZ4	4.6 FT	15W	295 GPH	7W	φ 16 x φ 20	3	60 - 90 G
FZ5	6.6 FT	33W	450 GPH	9W	φ 19 x φ 24	3	90 - 125 G
FZ6	8 FT	43W	550 GPH	13W	φ 19 x φ 24	4	125 - 175 G

ROUTINE MAINTENANCE



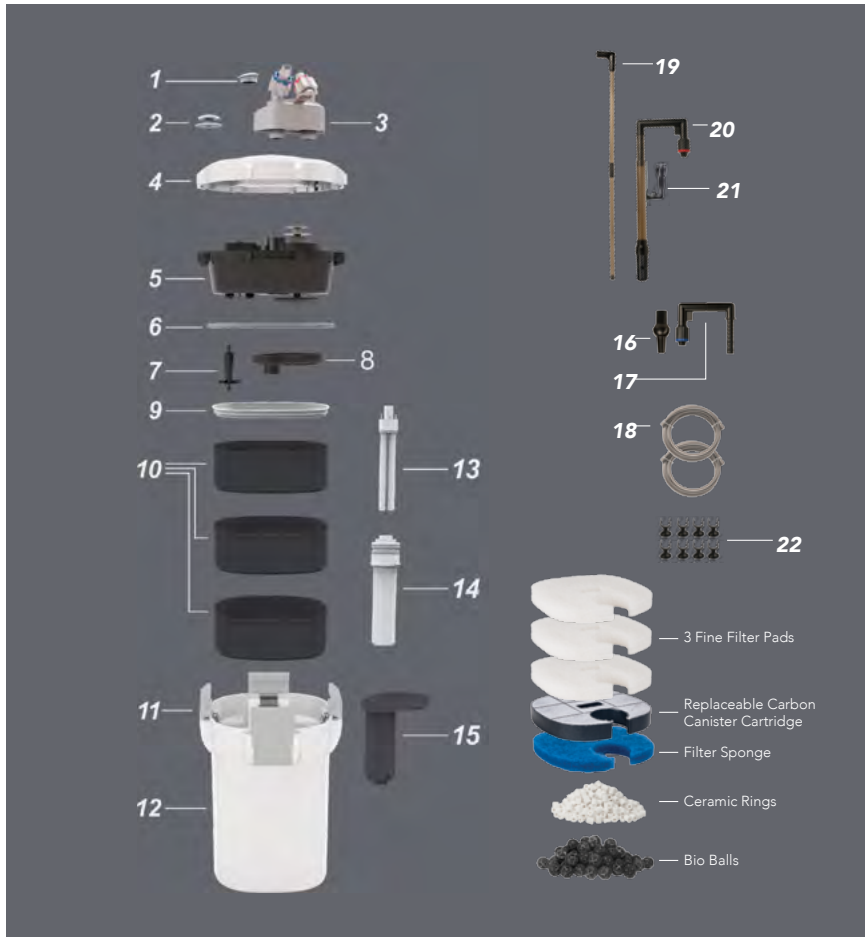
- Turn the impeller cover counter-clockwise to remove.
- Lift the impeller out of the housing for routine inspection and/or cleaning. If you hear excessive noise or you experience decreased water flow, it may be time to clean or replace your impeller.
- It is recommended to routinely inspect and/or clean the barrelhead o-ring. Use a silicone based lubricant on the barrelhead o-ring before re-installation.
- Make sure that the top rim of the canister barrel is clean and free of any debris, dirt or dust before re-installing the barrelhead to the canister barrel.

FEATURES



- High Performance
- Quiet Operation
- Patented One Pump EZ Prime System
- Easy to Use & Maintain
- Helps Provide Crystal Clear Water
- Built-in UV Tilt Safety Switch
- Protective UV Quartz Tube Cover
- Includes Replaceable Canister Carbon Cartridge
- Suitable for Freshwater or Saltwater

EXPLODED VIEW

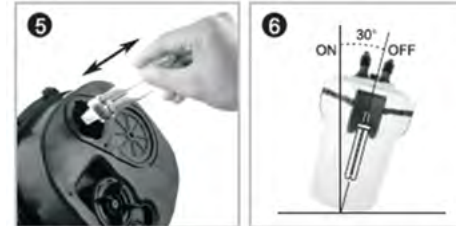


UV BULB REPLACEMENT

UV Model Only



- Remove the Water Flow Housing / UV guard by loosening the mounting screws with an appropriate screwdriver.
- Once the screws are removed, carefully lift up the UV guard. Careful not to damage the UV Quartz Tube.
- Gently turn the UV Quartz Tube counter-clockwise to loosen the Quartz Tube for removal.
- Once the UV Quartz Tube is loosened, carefully pull the quartz tube up and over the UV Bulb.



- Replace the UV Bulb and repeat the process in reverse order to re-install UV Bulb, Quartz Tube and UV Guard.
- As a safety precaution, all Forza Canister Filters come with an auto-shutoff feature which shuts off the UV bulb when the filter is tilted 30 degrees or more in any direction.

**Caution:**

1. Make sure to power off and unplug the unit before performing any maintenance.
2. Aquatop recommends replacing the UV Bulb every 6-9 months
3. Check for moisture on the inside of the UV quartz tube when performing routine maintenance. If moisture is found, use a silicone based lubricant on the quartz tube o-ring or replace the quartz tube as needed.
4. Low level noise or vibration is normal when starting the unit.
5. Do not look directly into the UV lamp when plugged in; UV light may damage your eyesight. Always keep cover on when UV light is in use.

- 1. Protected UV Power Switch
- 2. One Pump EZ Prime Button
- 3. Quick Dis-connect Valve
- 4. Canister Lid
- 5. Pump Head
- 6. Main O-ring Seal
- 7. Impeller
- 8. Impeller Cover
- 9. Media Tray Lid
- 10. Media Trays
- 11. Barrel Head Clips
- 12. Canister Body
- 13. UV Light Bulb
- 14. Quartz Tube
- 15. Water Flow Housing
- 16. Optional Jet Return
- 17. Outlet U-bar
- 18. Inlet/Outlet Tubing
- 19. Spray Bar
- 20. Inlet U-bar
- 21. Surface Skimmer
- 22. Mounting Clips



- To re-assemble the barrelhead to the canister barrel, be sure to line up the water flow housing to the opening in the media trays.
- Secure the barrelhead to the canister barrel by lifting the barrelhead handles up and over the barrelhead hinges.
- Once the top portion on the barrelhead handles are on the hinges, press the bottom of the handles inward towards the body of the canister barrel.
- Make sure that all four barrelhead handles are secure and in the locked position before moving the canister filter.



- To install the Quick Dis-connect Lever, make sure that the lever is in the up position and that all o-rings are present and installed correctly. Next, line up the Quick Dis-connect Valve to the top portion of the barrelhead and press down firmly.
- Once the Quick Dis-connect Valve is installed, press the lever to the down position to open the water valves and secure the valve block to the barrelhead.
- The Quick Dis-connect Valve Block in appropriately labeled for the corresponding water flow direction.
- Be sure to tighten the water hoses securely at each lock nut junction.

ITEM	HEAD HEIGHT	POWER	FLOW RATE	UV LIGHT	PIPE TYPE	MEDIA CASE LAYERS	TANK VOLUME
FZ7 UV	4.6 FT	15W	295 GPH	7W	φ 16 x φ 20	3	60 - 90 G
FZ9 UV	6.6 FT	33W	450 GPH	9W	φ 19 x φ 24	3	90 - 125 G
FZ13 UV	8 FT	43W	550 GPH	13W	φ 19 x φ 24	4	125 - 175 G

INSTALLATION DIAGRAM



RECOMMENDED TUBING INSTALLATION



1. Determine the location where the FORZA Canister Filter will be placed. For best results, place the canister filter below your aquarium. Next, make sure that the canister filter is unplugged and the canister body and inlet/outlet tubing are completely empty of water. Cut both the Inlet and Outlet hoses to the desired length leaving a little slack so that the canister filter can be re-positioned if necessary. This will help to maximize the speed and efficiency of the water flow through the filtration system.
2. For maximum efficiency, avoid any bends, kinks or loops in the inlet/outlet tubing.

INSTALLATION DIAGRAM



- The Inlet U-bar can be cut to the desired length. Be sure to leave enough room on the U-bar to install 3 o-rings.
- Check the Inlet U-bar to make sure that the o-rings are present and installed properly.
- Outlet Spray bar water return option.
- Outlet Jet Spray water return option.



- Use the included spray bar connector to connect each spray bar piece.
- Secure the spray bar to your aquarium glass wall using the included suction cups.
- Adjust the Inlet tube to the desired height.
- Be sure to tighten the water hoses securely at each lock nut junction.



- Surface Skimmer option.
- If you do not wish to use the optional Surface Skimmer, plug the skimmer attachment with the included cover.
- For maximum effectiveness, keep your aquarium waterline at the same level as the Surface Skimmer collection cup.
- To open the canister filter barrelhead, lift the barrelhead handles out and up.



- Next, lift the barrel head handles up and over the barrelhead hinges and let the handles fall to the outward position.
- Use the barrelhead carrying handle to lift the barrelhead up and out of the canister barrel. Make sure that all four barrelhead handles are in the outward position and free from the barrelhead hinges.
- All Forza Canister Filters come with multi-stage Filtration Media for mechanical, chemical & Biological filtration.
- Aquarium water travels through the canister filtration media starting from the bottom moving upwards.